



11 Ashbrook Street

Saltram Meadow, Plymouth, PL9 7FH

£299,950



Superbly-presented 3-storey townhouse situated in this very popular position. The accommodation briefly comprises an entrance hall with downstairs cloakroom/wc, dual aspect lounge opening onto the garden plus a dual aspect kitchen/dining room. The first and second floor landings are both dual aspect and extremely spacious. There are 4 bedrooms together with a family bathroom and an ensuite shower room to bedroom one. Enclosed rear garden. Garage & driveway. Double-glazing & central heating. Being sold with no onward chain.



ASHBROOK STREET, SALTRAM MEADOW, PL9 7FH

ACCOMMODATION

Front door opening into the entrance hall.

ENTRANCE HALL 11'2 x 7'2 (3.40m x 2.18m)

Providing access to the ground floor accommodation. Staircase ascending to the first floor. Under-stairs cupboard.

LOUNGE 16'2 x 9'7 (4.93m x 2.92m)

Hard wood flooring. Window with a fitted blind to the front elevation. French doors to the rear overlooking and opening onto the garden.

KITCHEN/DINING ROOM 16'2 x 8'2 (4.93m x 2.49m)

A superbly-fitted kitchen with a comprehensive range of base and wall-mounted cabinets with gloss fascias, matching work surfaces and splash-backs. Inset single drainer sink unit with a mixer tap. Inset AEG induction hob with a cooker hood above. Built-in AEG double oven and grill. Integral fridge, freezer and dishwasher. Ample space for dining table and chairs. Concealed LED feature lighting. Window to the rear overlooking the garden. Window with a fitted blind to the front elevation.

DOWNSTAIRS WC/UTILITY 7'1 x 4'9 (2.16m x 1.45m)

Space for tumble dryer and washing machine beneath the work surface. Fitted with a wc and a circular basin set onto a cabinet. Obscured window to the rear elevation.

FIRST FLOOR LANDING 16'2 x 7'1 (4.93m x 2.16m)

Providing a spacious approach to the first floor accommodation. Dual aspect with an obscured window to the rear and a window to the front elevation. Staircase continuing to the top floor.

BEDROOM ONE 11'9 x 9'8 (3.58m x 2.95m)

Full-height window with a Juliette balcony to the front elevation. Doorway opening into the shower room.

ENSUITE SHOWER ROOM 9'6 x 5'2 (2.90m x 1.57m)

Comprising an enclosed shower with waterproof panelling and a built-in shower system, wc and pedestal basin. Bathroom cabinet. Obscured window to the rear elevation.

BEDROOM TWO 16'2 x 8'4 (4.93m x 2.54m)

Full-height window with a Juliette balcony to the front elevation. Window to the rear elevation. This room is currently used as an office/dressing room.

TOP FLOOR LANDING 16'2 x 7' (4.93m x 2.13m)

Doors providing access to the top floor accommodation. Dual aspect with windows to the front and rear elevations. Loft hatch. Recessed cupboard with hanging rail and shelf.

BEDROOM THREE 16'2 x 8'6 (4.93m x 2.59m)

Windows to both the front and rear elevations.

BEDROOM FOUR 10' x 8'6 (3.05m x 2.59m)

Window to the front elevation.

FAMILY BATHROOM 9'11 max width x 7'4 (3.02m max width x 2.24m)

Comprising a bath, wc and pedestal basin with a tiled splash-back. Partly-tiled walls.

GARAGE 18'10 x 9'5 (5.74m x 2.87m)

Constructed beneath a pitched roof. Up-&-over style door to the front elevation. Side access door. Power.

OUTSIDE

To the front there is an area laid to chippings enclosed by railings. A paved pathway leads to the main front door which has a covered canopy. The rear garden has been landscaped with areas laid to lawn, chippings and artificial grass. There is a timber deck plus a rubber crumb child's play area, outside power and a small pond. From the garden there is access to the garage.

COUNCIL TAX

Plymouth City Council
Council tax band D

SERVICES

The property is connected to all the mains services: gas, electricity, water and drainage.

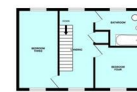
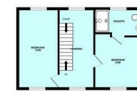
AGENT'S NOTE

There is a management fee of approximately £186.09 per annum to cover the maintenance of the communal areas.

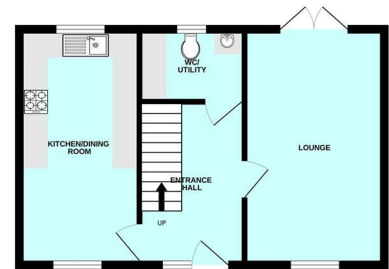
Area Map



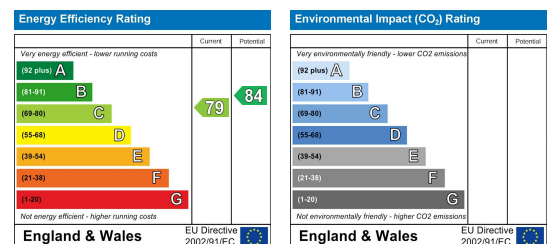
Floor Plans



GROUND FLOOR



Energy Efficiency Graph



These particulars, whilst believed to be accurate are set out as a general outline only for guidance and do not constitute any part of an offer or contract. Intending purchasers should not rely on them as statements of representation of fact, but must satisfy themselves by inspection or otherwise as to their accuracy. No person in this firm's employment has the authority to make or give any representation or warranty in respect of the property.